

# CRYSTAL MOUNTAIN



**GLACIER**  
Bottled Water Cooler

# GLACIER

## Bottled Water Cooler



The Glacier cooler is sophistication simplified. The rounded cabinet has a stylish fluted front, giving it a classic Greek column design. Features include a removable reservoir and the DryGuard™ no spill system. The Glacier is available in white or black color, and in Hot & Cold or Cook & Cold options.

### Features

- Hot & Cold or Cook & Cold models
- Polypropylene Faucet with self-closing handle
- Epoxy coated aluminum evaporator band
- ENERGY STAR™ certified
- One piece blow molded polyethylene cabinet
- Adjustable cold water thermostat
- Free standing internal structure
- White or black cabinet color options
- #304 stainless steel cold water removable reservoir
- #304 stainless steel hot tank - internal heating element
- Noise dampening technology - Compressor muffler system
- Optional POU conversion kit in white or black
- UL Certified to NSF372



# GLACIER

## Bottled Water Cooler



### Performance and specifications

#### DryGuard™

Crystal Mountain's patented sealed-system DryGuard™ feature, moulded from polypropylene, protects against leaks caused by cracked and faulty bottles.

#### General

Air cooled, bottled type water cooler

#### Cabinet

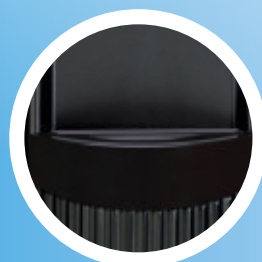
Blow molded, high density polyethylene(HDPE) resistant to cracking

#### Faucet Type

Polypropylene faucet with self closing handle. Hot Faucet includes a child resistant handle which requires dual action to activate.



Item		Specifications
Power rating		100 -115VAC 60Hz
Standard current		Hot & Cold: 6.2A, Cook & Cold: 1.2A
Power Consumption	Cold	Hot & Cold: 70W, Cook & Cold: 74W
	Hot	450W
Cold	Refrigerant	R134a
	Temp range	4-10° C (39.2 - 50° F)
	Capacity	2.8L (0.7 us gal)
Hot	Temp range	74-92° C (165.2 - 197.6°F)
	Capacity	2L (0.5 us gal)
Refrigerant charge		Hot & Cold: 27g(0.95 oz), Cook & Cold:25g (0.90 oz)
Product weight		Hot & Cold: 13.7kg (30.1 lb), Cook & Cold: 13.4kg (29.6 lb)
Product boxed weight		Hot & Cold: 14.8kg (32.6 lb), Cook & Cold: 14.6kg (32.1 lb)
Product dimensions		312(W) X 314 (D) X 980(H)mm 12.2"(W) X 12.4"(D) X 38.6"(H)
Product boxed dimensions		320(W) X 330(D) X 1000(H)mm 12.5"(W) X 13.0"(D) X 39.4"(H)
Loading quantity		20' Container : 252 Units 40' Container : 518 Units
IEC protection class		Class 1
Certifications		C-UL-US, NSF372, EnergyStar
Warranty		Five year



Removable drip tray



Hot tank power switch



## **Crystal Mountain Products Limited**

### **North American Sales Office**

200 Carnegie Drive, Suite 234  
St. Albert, AB, T8N 5A7 Canada  
Tel: 1 780 454 4545  
E-mail: [sales@crystalcoolers.com](mailto:sales@crystalcoolers.com)



[www.crystalcoolers.com](http://www.crystalcoolers.com)

Crystal Mountain has a policy of continuous development and reserves the right to change specifications without notification.

Copyright 2022 Crystal Mountain Products Limited | All Rights Reserved

